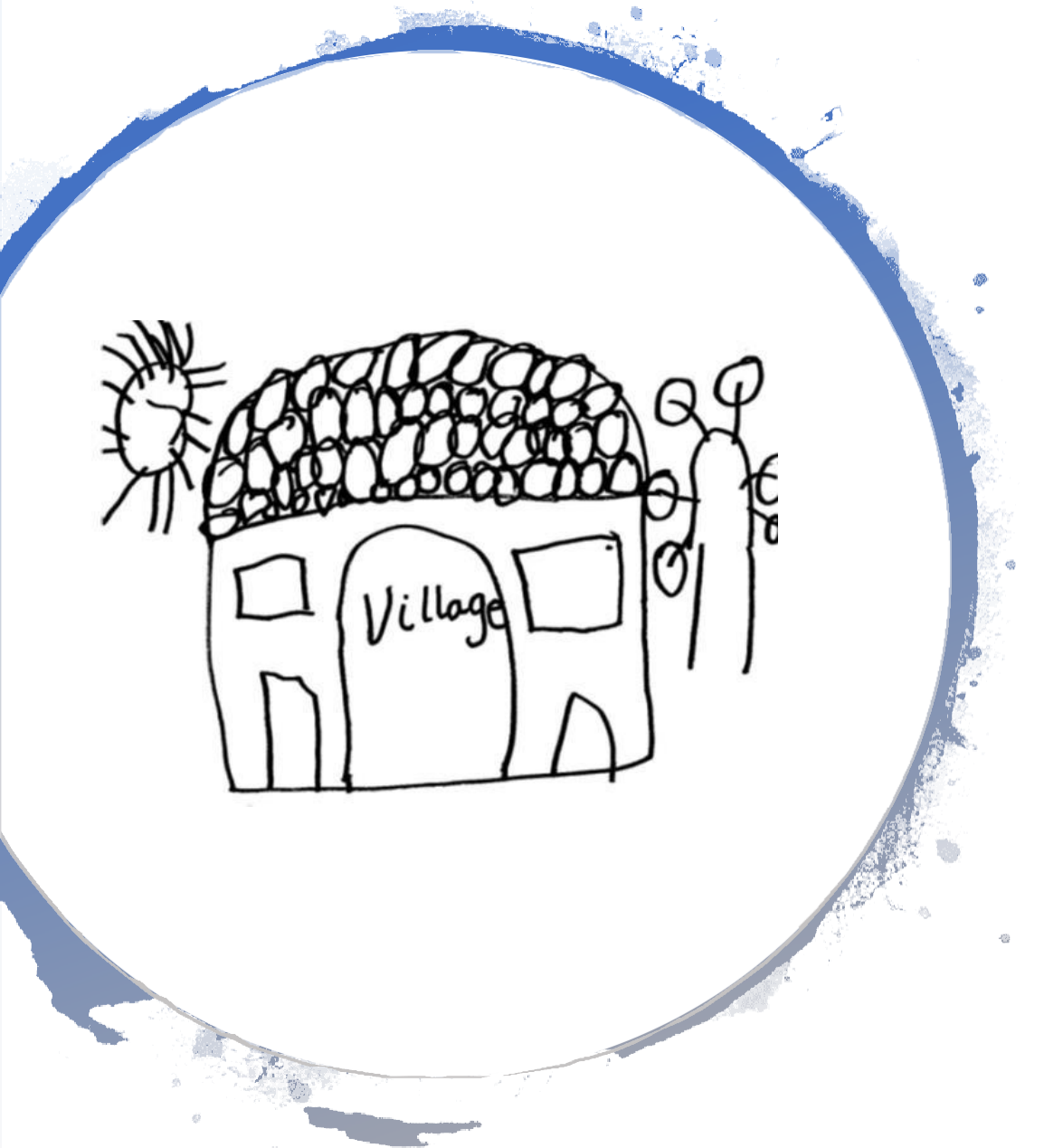




Welcome to Reception  
2025





The aim of this presentation is to make you familiar with the day-to-day life of Reception, set out school expectations and give you some general school information.



## The School Day - Breakfast Club

- We run a breakfast club from 8:00am – 8:45am for children from Reception to Year 6.
- You need to book your child's place through ParentPay (a link can be found on the school website).





## The School Day

**School gates open at 8:45am till 9:00am** – please see your child to the door and pass any messages to the teaching assistant on the door.



**School ends at 3:10** – please wait patiently by the ramp. We will dismiss children one at a time to a known adult. Please ensure you let school know if someone different is collecting your child.

# A Warm Welcome



Mrs Wheeldon  
Headteacher



Mr Dixon  
PSA



Miss Begley  
Reception  
Teacher



Miss Brogden  
Reception TA

# A typical day in Reception

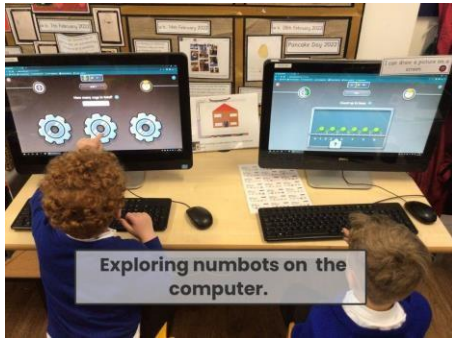
## Timetable of the day

8:45 – 9:10	Register and Reading
9:10 – 9:30	Adult input
9:30 – 11:00	Working with an adult of child initiated (inside and outside)
11:00 – 11:45	Phonics input and reading activities
Lunchtime	
12:45 – 1:00	Register and fine motor activities (handwriting)
1:00 – 1:30	Adult input (maths)
1:30 – 2:30	Working with an adult of child initiated (inside and outside)
2:30 – 3:00	Story time & getting ready for home



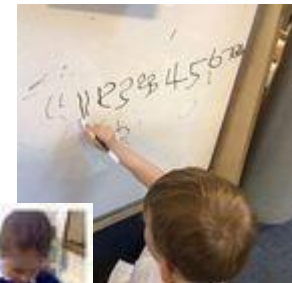


# A typical day in Reception

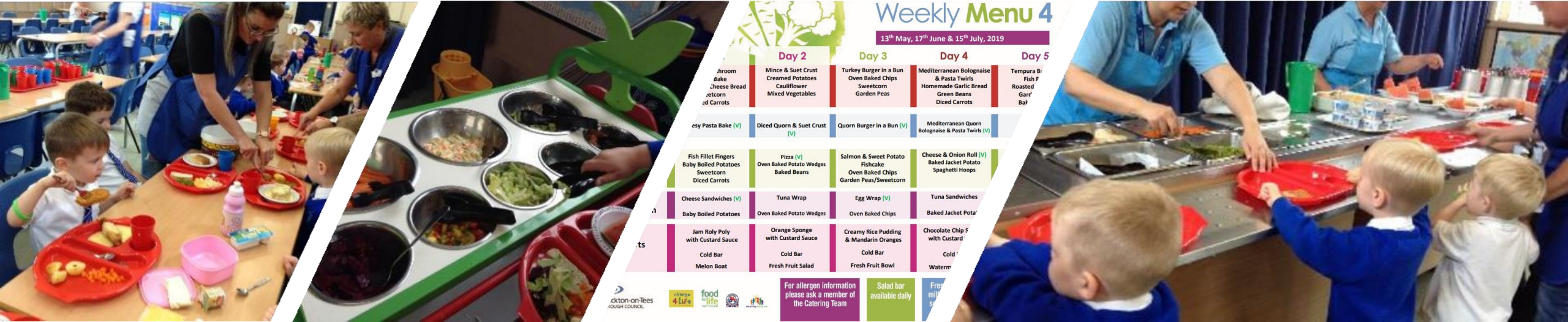


The areas of learning are:

- communication and language
- physical development
- personal, social and emotional development
- literacy
- mathematics
- understanding the world
- expressive arts and design







## The School Day - School Meals

Our school meals are a delicious healthy option for your child. Children get 3 option choices each day which can be selected by you at home using Parent Pay. Menus for the term are also available on our school website. There are lots of adults available to support your child in cutting up their food.





## Our Expectations - School Uniform

Our school uniform is listed below.

- **Royal blue jumper or cardigan**
- **Grey trousers, skirt or dress.**
- **White shirt**
- **School tie**
- **Black shoes (Velcro or buckle. Nothing with a heel.)**
- **A suitable coat.**

**All clothing, including shoes, need to be labelled with at least your child's initials.**

Any items with the school logo on can be ordered from Motif8.



# Our expectations – Book Bag

We expect every child to have a book bag in school everyday. This allows children to feel part of the school, carry books and reading records to and from school without them getting damaged as well as homework once a week.

Book bags should not be used to bring toys into school. We have all the resources we need in school and unless we ask for them to be sent in for a topic toys from home just cause disruption and distraction.



We offer a practical, hands on curriculum so I'm sorry if your child's uniform gets dirty but...

The black mark was made with a pen. They are trying so hard to develop their drawing and writing skills.

Painting helps children develop their creativity. Sometimes they accidentally get paint on their clothes as they work.



The grass stain shows that they have been using the outdoor area to develop their physical skills.

This splodge is part of their lunch. They are trying to use a knife and fork correctly when I eat.

The mud kitchen is very messy but helps them develop their imagination.

Sometimes their uniform comes home a little wet. They learn a huge amount of science and maths when they play in the water.



## Our Expectations – Home Learning

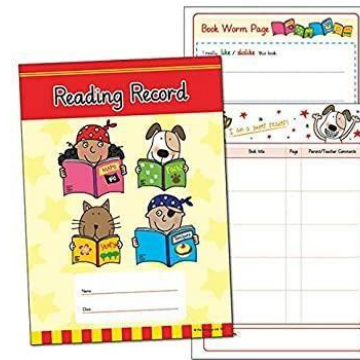
We set weekly home learning activities on a Friday (in line with the rest of the school). This is normally a very practical activity that will practice the learning we have done in school that week.

Activities might include practicing phonics, going on a number hunt, writing their name or going on a walk to look for something.

We subscribe to a lot of online sites to help children learn which we might also set for home activities.

All activities will be put onto Seesaw, our online learning platform, but a paper copy will be available if needed.

We do expect parents to read with their child each night and record a comment in their reading record (that school provides.)





## Phonics

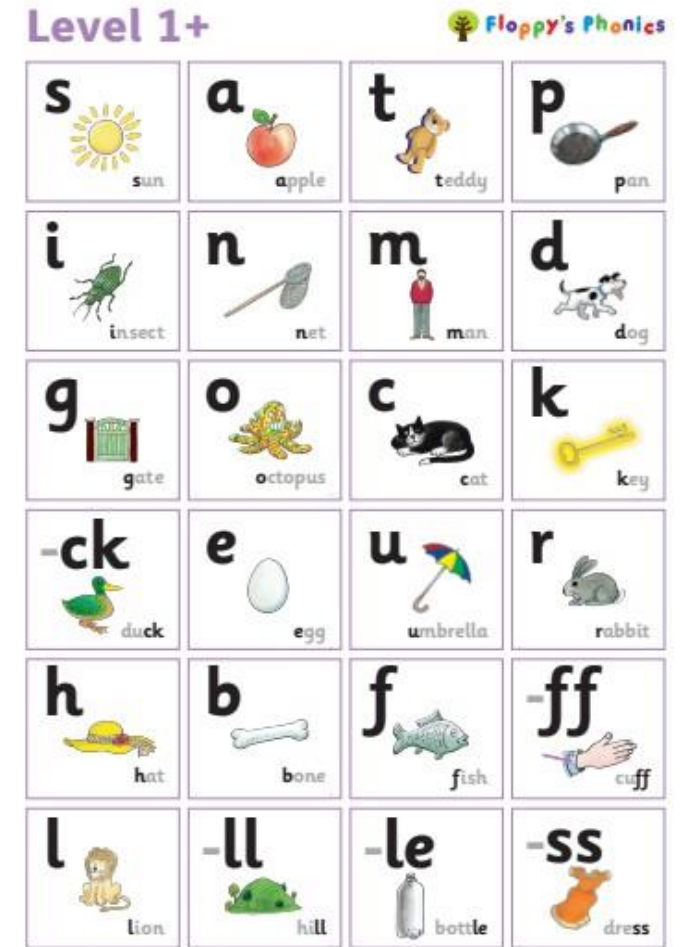
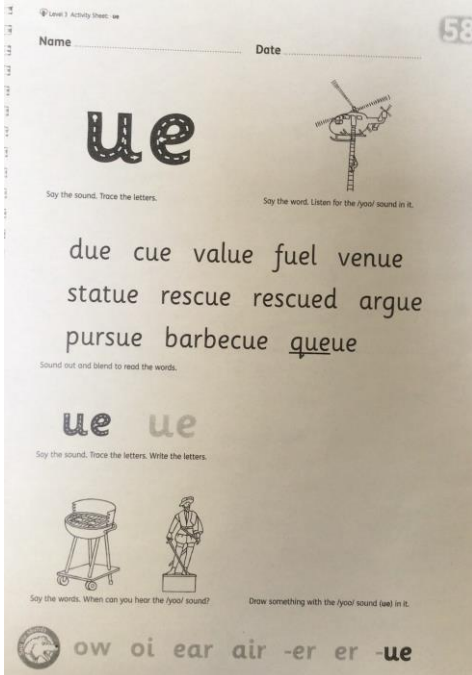
Phonics is the building blocks of reading.

We teach phonics daily and in a structured, systematic way.

We use a combination of actions, pictures, songs and sheets to help children learn the letters and the corresponding sound.

We practice using these sounds and letters to read and write in fun, relevant and practical ways.

We send home letter cards, activities and online support to help you support and practice your child learning to read and write.



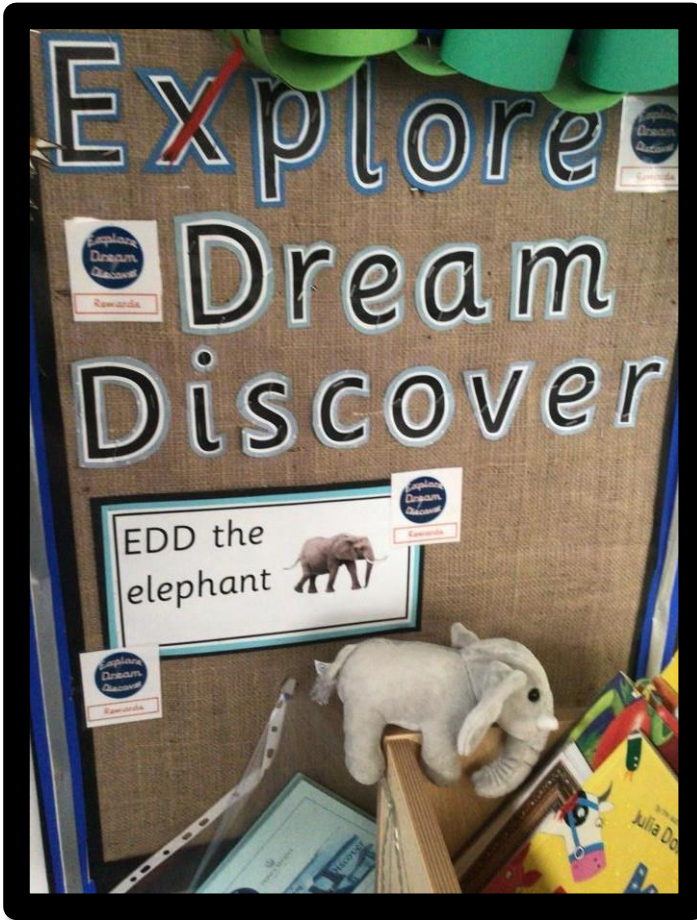
For use within purchasing school only © Oxford University Press © Phonics International Ltd. 2022

## Attendance and Punctuality

- Good attendance and punctuality is vital otherwise children fall behind with their learning.
- Local Authority deal with attendance issues and can issue fines for low attendance.
- Holidays cannot be authorised and these can incur fines. This is not something that school deals with and we do not receive any fine money.
- If your child's attendance drops then you may be asked to provide medical evidence each time they are subsequently absent.
- Please call school before 9am to inform us about a child's absence.



# EDD the elephant



Encourages children to work towards maths, writing, reading, social and challenges at their level.



# Village Values

- Village Values are a whole school system that encourages children to be aware of and work on life-long skills and attitudes.
- We love to hear about children using these values at home too.



## How to keep in touch and find out more:

The school website <https://www.thevillageprimary.org.uk/> is a great starting place for all questions and queries about school.

We use Seesaw daily to post pictures and activities of your child. A great way to see your child's learning on a daily basis.

The school Facebook page is useful way to find out what is going on in the wider school.

Any forms, letters or payments get sent and completed via the Parent Pay app. You will receive a text message or email with links to these.

Please keep us up to date with your telephone number in case of emergencies.

